

**GENERAL NOTES AND SPECIFICATIONS**

THE GENERAL CONTRACTOR SHALL FULLY COMPLY WITH THE 2021 IBC AND ALL ADDITIONAL STATE AND LOCAL CODE REQUIREMENTS.  
 2021 IEC AND 2006 IMC SHALL BE USED.  
 THE CONTRACTOR SHALL ASSUME FULL RESPONSIBILITY FOR ANY WORK KNOWINGLY PERFORMED CONTRARY TO SUCH LAWS, ORDINANCES, OR REGULATIONS. THE CONTRACTOR SHALL ALSO PERFORM COORDINATION WITH ALL UTILITIES AND STATE SERVICE AUTHORITIES.

WRITTEN DIMENSIONS ON THESE DRAWINGS SHALL HAVE PRECEDENCE OVER SCALED DIMENSIONS. THE GENERAL CONTRACTOR SHALL VERIFY AND IS RESPONSIBLE FOR ALL DIMENSIONS (INCLUDING ROUGH OPENINGS) AND CONDITIONS ON THE JOB AND MUST NOTIFY THIS OFFICE OF ANY VARIATIONS FROM THESE DRAWINGS.

THE GENERAL CONTRACTOR IS RESPONSIBLE FOR THE DESIGN AND PROPER FUNCTION OF PLUMBING, HVAC AND ELECTRICAL SYSTEMS. THE GENERAL CONTRACTOR SHALL NOTIFY THIS OFFICE WITH ANY PLAN CHANGES REQUIRED FOR DESIGN AND FUNCTION OF PLUMBING, HVAC AND ELECTRICAL SYSTEMS.

THIS OFFICE SHALL NOT BE RESPONSIBLE FOR CONSTRUCTION MEANS AND METHODS, ACTS OR OMISSIONS OF THE CONTRACTOR OR SUBCONTRACTOR, OR FAILURE OF ANY OF THEM TO CARRY OUT WORK IN ACCORDANCE WITH THE CONSTRUCTION DOCUMENTS. AND DEFECT DISCOVERED IN THE CONSTRUCTION DOCUMENTS SHALL BE BROUGHT TO THE ATTENTION OF THIS OFFICE BY WRITTEN NOTICE BEFORE PROCEEDING WITH WORK. REASONABLE TIME NOT ALLOWED THIS OFFICE TO CORRECT THE DEFECT SHALL PLACE THE BURDEN OF COST AND LIABILITY FROM SUCH DEFECT UPON THE CONTRACTOR.

**DESIGN CRITERIA:** 2006 IRC AND IBC

ROOF: 50 PSF SNOW LOAD

- \*8 PSF TOP CHORD DL.
- \*7 PSF BOTTOM CHORD DL.
- \*5 PSF NET WIND UPLIFT.

FLOOR: 40 PSF LL.

- \*10 PSF TOP CHORD DL.
- \*5 PSF BOTTOM CHORD DL.

SOIL: \*2,000 PSF ALLOWABLE (ASSUMED), TO BE AT TIME OF EXCAVATION

FROST DEPTH: \*2'-0"

SEISMIC ZONE: C.

WIND: 90 MPH (90 MPH 3 SEC GUST), EXPOSURE C.

THIS STRUCTURE SHALL BE ADEQUATELY BRACED FOR WIND LOADS UNTIL THE ROOF, FLOOR AND WALLS HAVE BEEN PERMANENTLY FRAMED TOGETHER AND SHEATHED.

INSTALL POLYISOCYANURATE FOAM TYPE INSULATION AT FLOOR AND PLATE LINES, OPENINGS IN PLATES, CORNER STUD CAVITIES AND AROUND DOOR AND WINDOW ROUGH OPENING CAVITIES.

INSTALL WATERPROOF GYPSUM BOARD AT ALL WATER SPLASH AREAS TO MINIMUM 70" ABOVE SHOWER DRAINS.

INSULATE WASTE LINES FOR SOUND CONTROL.

EXHAUST ALL VENTS AND FANS DIRECTLY TO OUTSIDE VIA METAL DUCTS, PROVIDE 90 CFM (MIN) FANS TO PROVIDE 5 AIR CHANGES PER HOUR IN BATHS CONTAINING TUB AND / OR SHOWER AND IN LAUNDRY ROOMS.

ALL RECESSED LIGHTS IN INSULATED CEILINGS TO HAVE THE I.C. LABEL.

PROVIDE SOLID BLOCKING UNDER ALL BEARING WALLS PERPENDICULAR TO JOISTS AND OTHER BEARING POINTS NOT OTHERWISE PROVIDED WITH SUPPORT.

**MISCELLANEOUS NOTES:**

EACH BEDROOM TO HAVE A MINIMUM WINDOW OPENING OF 5.7 SQ. FT. WITH A MINIMUM WIDTH OF 20 IN. AND A SILL LESS THAN 44" ABOVE FIN. FLR.

ALL GLAZING WITHIN 18 IN. OF THE FLOOR AND/OR WITHIN 24 IN. OF ANY DOOR (REGARDLESS OF WALL PLANE) ARE TO HAVE SAFETY GLAZING. ALL GLAZING WITHIN 60 IN. OF TUB OR SHOWER FLOOR, 60 IN. OF A STAIR LANDING OR GREATER THAN 9 SQUARE FEET ARE TO HAVE SAFETY GLAZING

SKYLIGHTS ARE TO BE GLAZED WITH TEMPERED GLASS ON OUTSIDE AND LAMINATED GLASS ON THE INSIDE (UNLESS PLEXIGLAS). GLASS TO HAVE MAXIMUM CLEAR SPAN OF 25 IN. AND FRAME IS TO BE ATTACHED TO A 2x CURB WITH A MINIMUM OF 4 IN. ABOVE ROOF PLANE.

ALL TUB AND SHOWER ENCLOSURES ARE TO BE GLAZED WITH SAFETY GLASS.

ALL EXTERIOR WINDOWS ARE TO BE DOUBLE GLAZED AND ALL EXTERIOR DOORS ARE TO BE SOLID CORE WITH WEATHERSTRIPPING. PROVIDE 1/2 IN. DEADBOLT LOCKS ON ALL EXTERIOR DOORS, AND LOCKING DEVICES ON ALL DOORS AND WINDOWS WITHIN 10 FT. (VERTICAL) OF GRADE. PROVIDE PEEP HOLE 54-66 IN. ABOVE FIN. FLOOR ON EXTERIOR ENTRY DOORS.

PROVIDE ONE SMOKE DETECTOR IN EACH ROOM AND ONE IN EACH CORRIDOR ACCESSING BEDROOMS. CONNECT SMOKE DETECTORS TO HOUSE POWER AND INTER-CONNECT SMOKE DETECTORS TO HOUSE POWER AND INTERCONNECT SO THAT, WHEN ANY ONE IS TRIPPED, THEY ALL WILL SOUND. PROVIDE BATTERY BACKUP FOR ALL UNITS.

PROVIDE COMBUSTION AIR VENTS (W/SCREEN AND BACK DAMPER) FOR GAS FIRE-PLACE AND ANY OTHER APPLIANCES WITH AN OPEN FLAME.

BATHROOMS AND UTILITY ROOMS ARE TO BE VENTED TO THE OUTSIDE WITH A FAN CAPABLE OF PRODUCING A MINIMUM OF 5 AIR EXCHANGES PER HOUR.

RANGE HOODS ARE ALSO TO BE VENTED TO THE OUTSIDE.

ELECTRICAL RECEPTACLES IN BATHROOMS, KITCHENS AND GARAGES SHALL BE G.F.I. OR G.F.I.C. PER NATIONAL ELECTRICAL CODE REQUIREMENTS.

INSULATE ALL ACCESS DOORS/ HATCHES TO CRAWL SPACES AND ATTICS TO THE EQUIVALENT RATING OF THE WALL, FLOOR OR CEILING THROUGH WHICH THEY PENETRATE. UNO ON PLANS.

ATTIC R-38

WALLS R-21

FLOORS R-30

PROVIDE CRAWLSPACE VENTING TO MEET THE REQUIREMENTS OF THE 2006 EDITION OF THE I.C.

PROVIDE SPECIAL INSPECTION, SPECIAL TESTING, REPORTING AND COMPLIANCE PROCEDURES ACCORDING TO THE 2006 INTERNATIONAL BUILDING CODE.

SPECIAL INSPECTOR QUALIFICATIONS: DEMONSTRATE COMPETENCE, TO THE SATISFACTION OF THE BUILDING OFFICIAL, FOR INSPECTION OF THE PARTICULAR TYPE OF CONSTRUCTION OR OPERATION IN QUESTION. PRIOR TO THE BEGINNING OF CONSTRUCTION, REVIEW THE SPECIAL INSPECTION REQUIREMENTS WITH THE ARCHITECT, ENGINEER, BUILDING OFFICIAL, GENERAL CONTRACTOR AND SPECIAL INSPECTORS.

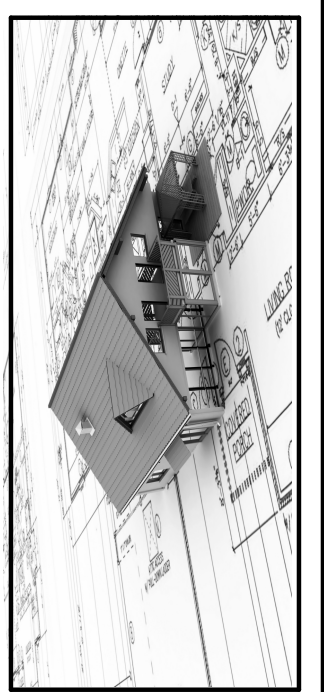
DUTIES OF THE SPECIAL INSPECTOR INCLUDE, BUT ARE NOT LIMITED TO: OBSERVE THE WORK FOR CONFORMANCE WITH THE APPROVED PERMIT DRAWINGS AND SPECIFICATIONS. BRING DISCREPANCIES TO THE IMMEDIATE ATTENTION OF THE GENERAL CONTRACTOR FOR BUILDING OFFICIAL.

FURNISH INSPECTION REPORTS FOR EACH INSPECTION TO THE BUILDING OFFICIAL, ARCHITECT, ENGINEER, GENERAL CONTRACTOR AND OWNER IN A TIMELY MANNER. SUBMIT A FINAL REPORT STATING WHETHER THE WORK REQUIRING SPECIAL INSPECTION WAS INSPECTED, AND WHETHER THE WORK IS IN CONFORMANCE WITH THE APPROVED PERMIT DRAWINGS AND SPECIFICATIONS.

DUTIES OF THE GENERAL CONTRACTOR INCLUDE, BUT ARE NOT LIMITED TO: NOTIFY SPECIAL INSPECTOR THAT WORK IS READY FOR INSPECTION AT LEAST 24 HOURS BEFORE THE INSPECTION IS REQUIRED.

MAINTAIN ACCESS TO WORK REQUIRING SPECIAL INSPECTION UNTIL IT HAS BEEN OBSERVED AND INDICATED TO BE IN CONFORMANCE BY THE SPECIAL INSPECTOR AND APPROVED BY THE BUILDING OFFICIAL. PROVIDE THE SPECIAL INSPECTOR WITH ACCESS TO APPROVED PERMIT DRAWINGS AND SPECIFICATIONS AT THE JOB SITE. MAINTAIN JOB-SITE COPIES OF ALL REPORTS SUBMITTED BY THE SPECIAL INSPECTOR.

DEFINITIONS:  
 CONTINUOUS INSPECTION: THE SPECIAL INSPECTOR IS OBSERVING THE WORK REQUIRING SPECIAL INSPECTION AT ALL TIMES.  
 PERIODIC INSPECTION: THE SPECIAL INSPECTOR IS ON SITE AS REQUIRED TO CONFIRM THAT THE WORK REQUIRING SPECIAL INSPECTION IS IN CONFORMANCE.



REVISION TABLE	NUMBER	DATE	REVISION BY	DESCRIPTION

JASMINE ANTHONY  
 BASTROP, LA

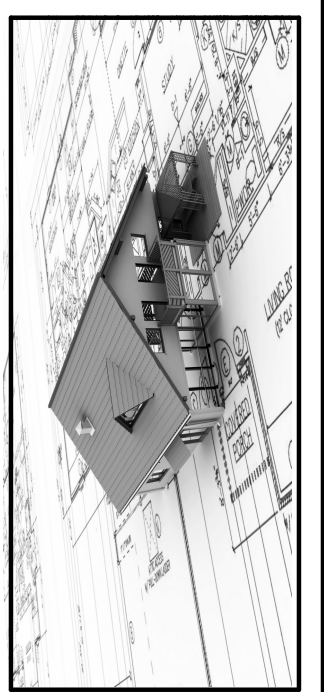
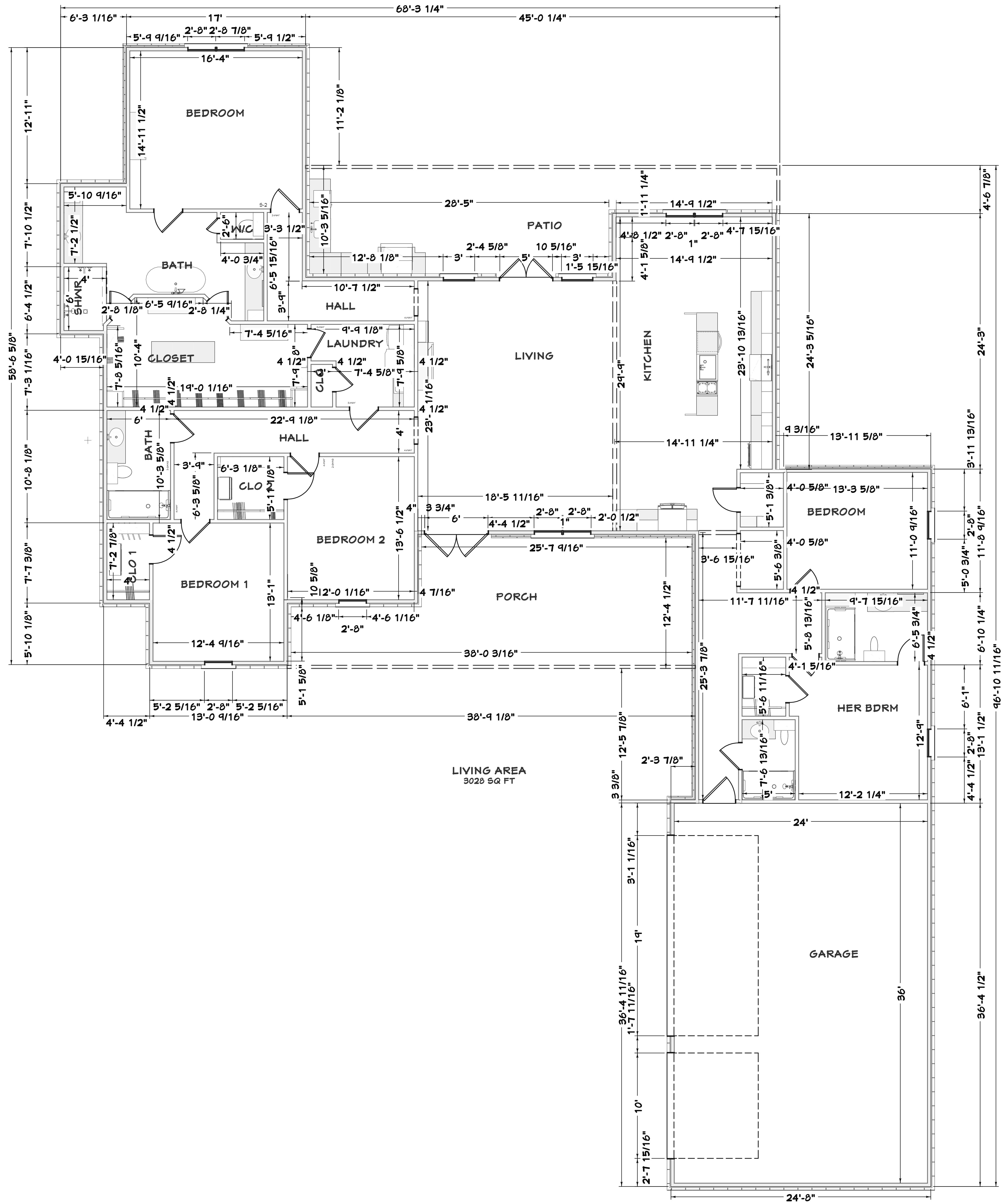
FOUNDATION

DRAWINGS PROVIDED BY:  
 Danny Russell  
 Russell's Plan Service, L.L.C.

DATE:  
 1/1/2025

SCALE:  
 1/4"=1'0"

SHEET:  
 P-1



REVISION TABLE	
NUMBER	DATE

JASMINE ANTHONY  
BASTROP, LA

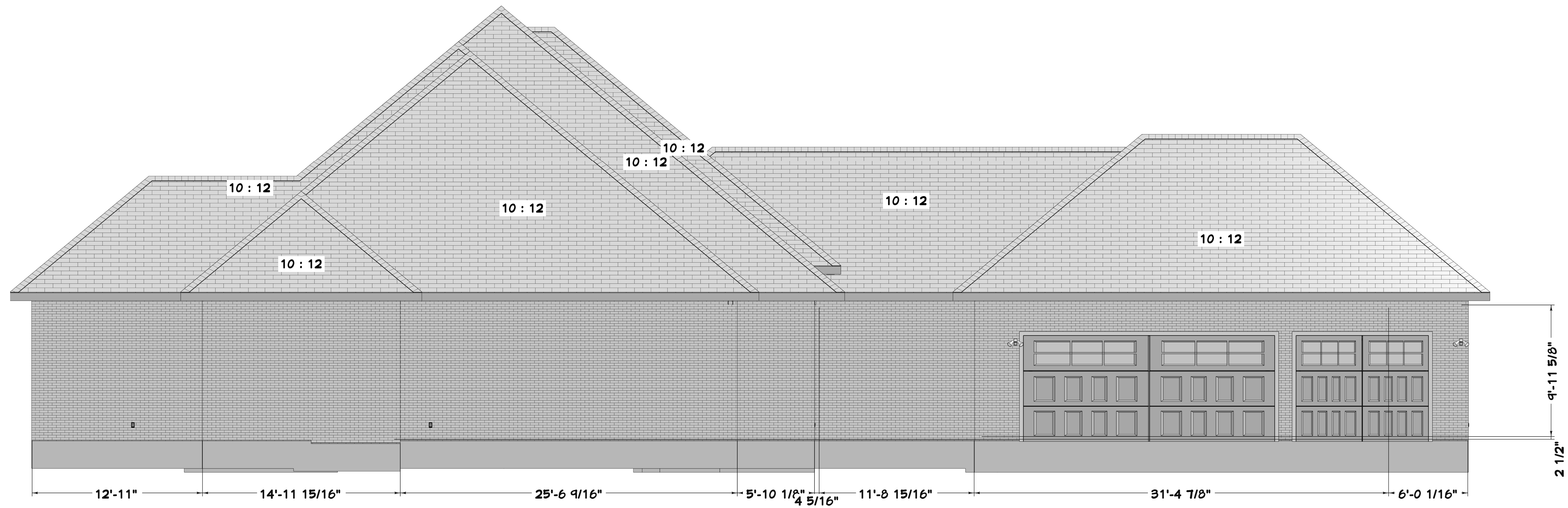
Floor Plan

DRAWINGS PROVIDED BY:  
Danny Russell  
Russell's Plan Service, L.L.C

DATE:  
1/1/2025

SCALE:  
1/4"=1'0"

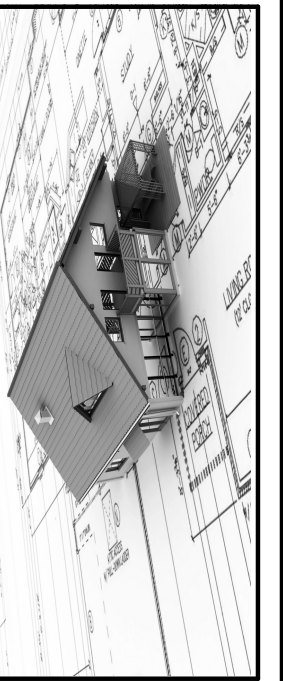
SHEET:  
2



Right View



Front View



REVISION TABLE	REVISION BY	DESCRIPTION
NUMBER	DATE	

JASMINE ANTHONY  
BASTROP, LA

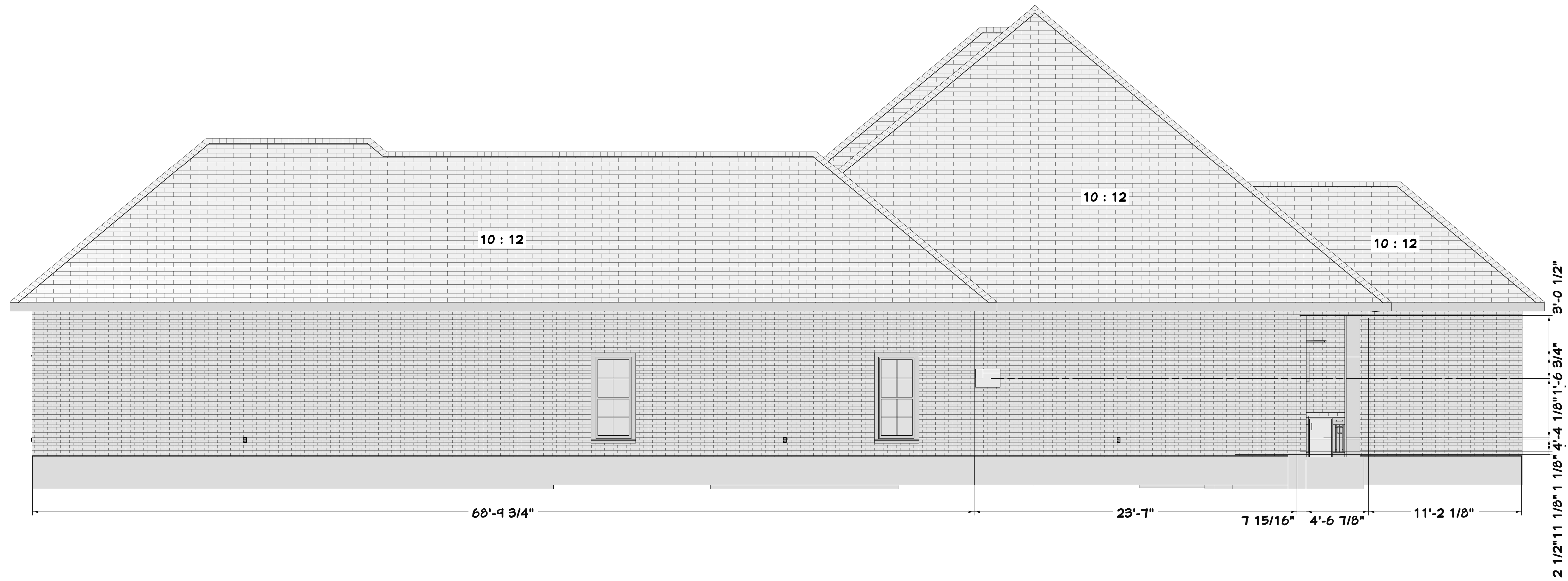
Elevations

DRAWINGS PROVIDED BY:  
Danny Russell  
Russell's Plan Service, L.L.C

DATE:  
1/1/2025

SCALE:  
1/4"=1'0

SHEET:  
3



Right View



Rear View



REVISION TABLE	
NUMBER	DATE

JASMINE ANTHONY  
BASTROP, LA

Elevations

DRAWINGS PROVIDED BY:  
Danny Russell  
Russell's Plan Service, L.L.C

DATE:  
1/1/2025

SCALE:  
1/4"=1'0"

SHEET:  
4

FIXTURE SCHEDULE													
NUMBER	LABEL	QTY	FLOOR	WIDTH	DEPTH	HEIGHT	DESCRIPTION	DIMENSIONS	MANUFACTURER	CODE	MANUFACTURER	COMMENTS	
A01	1542 STYLE MM HOOD	1	1	24 3/4"	11 3/8"	25 5/8"	1542 STYLE MM HOOD	24 3/4"x11 3/8"x25 5/8"	CRYSTAL CABINET WORKS INC.		CRYSTAL CABINET WORKS INC.		
A02	APRON FRONT SINK [24 1/2"]	1	1	24 1/2"	24"	23 3/16"	APRON FRONT SINK [24 1/2"]	24 1/2"x24"x23 3/16"					
A03	BUILT IN MICROWAVE STANDARD	1	1	24 1/2"	14 1/16"	14 1/16"	BUILT IN MICROWAVE STANDARD	24 1/2"x14 1/16"x14 1/16"					
A04	CLOSET POLE	1	1	20 15/16"	18 7/8"	1 3/8"	CLOSET POLE	20 15/16"x18 7/8"x1 3/8"					
A05	CLOSET POLE	1	1	21 3/16"	18 7/8"	1 5/8"	CLOSET POLE	21 3/16"x18 7/8"x1 5/8"					
A06	CLOSET POLE	1	1	21 7/16"	18 7/8"	1 5/8"	CLOSET POLE	21 7/16"x18 7/8"x1 5/8"					
A07	CLOSET POLE	1	1	23 1/4"	18 7/8"	1 3/8"	CLOSET POLE	23 1/4"x18 7/8"x1 3/8"					
A08	CLOSET POLE	1	1	24"	18 7/8"	1 3/4"	CLOSET POLE	24"x18 7/8"x1 3/4"					
A09	CLOSET POLE	2	1	24"	18 7/8"	1 5/8"	CLOSET POLE	24"x18 7/8"x1 5/8"					
A10	CLOSET POLE	1	1	26 13/16"	19 7/8"	1 5/8"	CLOSET POLE	26 13/16"x19 7/8"x1 5/8"					
A11	CLOSET POLE	2	1	21"	18 7/8"	1 5/8"	CLOSET POLE	21"x18 7/8"x1 5/8"					
A12	CLOSET POLE	1	1	41 15/16"	18 7/8"	1 5/8"	CLOSET POLE	41 15/16"x18 7/8"x1 5/8"					
A13	CLOSET POLE	7	1	48 5/8"	18 7/8"	1 5/8"	CLOSET POLE	48 5/8"x18 7/8"x1 5/8"					
A14	CLOSET POLE	2	1	49"	19 7/8"	1 3/8"	CLOSET POLE	49"x19 7/8"x1 3/8"					
A15	CLOTHES DRYER NO.02	1	1	21"	31 1/4"	45 5/8"	CLOTHES DRYER NO.02	21"x31 1/4"x45 5/8"					
A16	ELONGATED TOILET	2	1	12"	28 1/8"	24 7/8"	ELONGATED TOILET	12"x28 1/8"x24 7/8"					
A17	ELONGATED TOILET	2	1	20"	28 1/8"	24 7/8"	ELONGATED TOILET	20"x28 1/8"x24 7/8"					
A18	OVAL UNDERMOUNT SINK [20 3/4"]	5	1	20 3/4"	14 7/16"	14"	OVAL UNDERMOUNT SINK [20 3/4"]	20 3/4"x14 7/16"x14"					
A19	FOT FILLER 1	1	1	18 1/8"	4 1/4"	10 1/8"	FOT FILLER 1	18 1/8"x4 1/4"x10 1/8"					
A20	PROFESSIONAL HOOD	1	1	35 1/8"	30 3/16"	44"	PROFESSIONAL HOOD	35 1/8"x30 3/16"x44"					
A21	ROUND DRAIN - SMALL ROUND SLOTTED	1	1	13 1/16"	13 1/16"	13 1/16"	ROUND DRAIN - SMALL ROUND SLOTTED	13 1/16"x13 1/16"x13 1/16"					
A22	SHOE SHELF	5	1	24 13/16"	13 11/16"	5 1/2"	SHOE SHELF	24 13/16"x13 11/16"x5 1/2"					
A23	SHOE SHELF	4	1	24 3/4"	13 11/16"	5 1/2"	SHOE SHELF	24 3/4"x13 11/16"x5 1/2"					
A24	SHOE SHELF	3	1	24 7/8"	13 11/16"	5 1/2"	SHOE SHELF	24 7/8"x13 11/16"x5 1/2"					
A25	SHOE SHELF	3	1	24 4/16"	13 11/16"	5 1/2"	SHOE SHELF	24 4/16"x13 11/16"x5 1/2"					
A26	SHOE SHELF	1	1	36"	13 11/16"	5 1/2"	SHOE SHELF	36"x13 11/16"x5 1/2"					
A27	SINGLE BASIN SINK [23"]	1	1	25"	22"	20 5/8"	SINGLE BASIN SINK [23"]	25"x22"x20 5/8"					
A28	SINGLE BASIN UNDERMOUNT SINK	1	1	20 5/16"	20 4/16"	21 11/16"	SINGLE BASIN UNDERMOUNT SINK	20 5/16"x20 4/16"x21 11/16"					
A29	SLIM FIREPLACE	2	1	50"	6"	11 7/8"	SLIM FIREPLACE	50"x6"x11 7/8"					
A30	SLIPPER PEDESTAL	1	1	61 7/8"	31 5/16"	42 1/4"	SLIPPER PEDESTAL	61 7/8"x31 5/16"x42 1/4"					
A31	SQUARE DRAIN - LARGE ROUND SLOTTED	1	1	4 1/2"	4 1/2"	3/4"	SQUARE DRAIN - LARGE ROUND SLOTTED	4 1/2"x4 1/2"x3/4"					
A32	STACKABLE CLOTHES WASHER	1	1	21"	33 1/16"	34"	STACKABLE CLOTHES WASHER	21"x33 1/16"x34"					
A33	STANDARD DOUBLE OVEN	1	1	24 1/2"	21 1/4"	50 13/16"	STANDARD DOUBLE OVEN	24 1/2"x21 1/4"x50 13/16"					
A34	TKC6C-18D-2	1	1	15"	14 7/16"	14 7/16"	TKC6C-18D-2	15"x14 7/16"x14 7/16"	REV-A-SHELF		REV-A-SHELF		
A35	TUB-SHOWER 6	1	1	60 15/16"	33"	74"	TUB-SHOWER 6	60 15/16"x33"x74"					
A36	TUB-SHOWER 6	1	1	60 15/16"	33"	70 1/16"	TUB-SHOWER 6	60 15/16"x33"x70 1/16"					
A37	TUB-SHOWER 6	1	1	72 1/2"	33"	74"	TUB-SHOWER 6	72 1/2"x33"x74"					
A38	UTILITY CLOSET HEAD	3	1	3"	3"	3 7/8"	UTILITY CLOSET HEAD	3"x3"x3 7/8"					
A39	WALL HOOD	1	1	24 13/16"	25 1/4"	30"	WALL HOOD	24 13/16"x25 1/4"x30"					
A40	CABLE+BOX	2	1	12 1/4"	15"	3"	CABLE+BOX	12 1/4"x15"x3"					
A41	DN	1	1	23 3/4"	21 1/2"	30 1/2"	CHEF/SERIES DISHWASHER	23 3/4"x21 1/2"x30 1/2"					
A42	GNE14J	1	1	32 3/4"	31"	64 7/8"	GNE14J - COUNTER-DEPTH FRENCH-DOOR REFRIGERATOR	32 3/4"x31"x64 7/8"	GE		GE		
A43	HCT3056S	1	1	30"	21"	6"	HCT3056S HERITAGE 30" GAS COOKTOP	30"x21"x6"	DACOR		DACOR		
A44	K-5240-G	3	1	5 3/4"	4 3/4"	4 13/16"	K-5240-G ALTEO SINGLE-FUNCTION SHOWERHEAD	5 3/4"x4 3/4"x4 13/16"	KOHLER		KOHLER		
A45	K-5240-G	2	1	5 3/4"	3"	11 1/16"	K-5240-G ALTEO SINGLE-FUNCTION SHOWERHEAD	5 3/4"x3"x11 1/16"	KOHLER		KOHLER		
A46	K-12711	2	1	5"	8 11/16"	3"	K-12711 ARTIFACTS WALL-MOUNT BATH SPOUT	5"x8 11/16"x3"	KOHLER		KOHLER		
A47	K-TT2761-3M	4	1	6 1/16"	4 5/8"	6 1/16"	K-TT2761-3M ARTIFACTS THERMOSTATIC VALVE TRIM	6 1/16"x4 5/8"x6 1/16"	KOHLER		KOHLER		
A48	O656	1	1	36 1/4"	32 1/2"	34 1/16"	O656 - 36" OUTDOOR GAS GRILL	36 1/4"x32 1/2"x34 1/16"	SUB-ZERO GROUP, INC		SUB-ZERO GROUP, INC		
A49	SHOE SHELF	30	1	24"	13 11/16"	5 1/2"	SHOE SHELF	24"x13 11/16"x5 1/2"					
A50	T1414B	2	1	7"	7 1/16"	12 1/2"	T1414B MONITOR 14 SERIES TRADITIONAL TUB TRIM	7"x7 1/16"x12 1/2"	DELTA		DELTA		
A51	T1414B	1	1	7"	9 13/16"	12 1/2"	T1414B MONITOR 14 SERIES TRADITIONAL TUB TRIM	7"x9 13/16"x12 1/2"	DELTA		DELTA		
A52	UGR14"	1	1	14"	20 3/4"	33 1/4"	MINI REFRIGERATOR	14"x20 3/4"x33 1/4"					

CABINET SCHEDULE													
NUMBER	LABEL	QTY	DESCRIPTION	CABINET MATERIAL	DIMENSIONS	WIDTH	DEPTH	HEIGHT	DOOR STYLE	DOOR HANDLE	DRAWER HANDLE	MANUFACTURER	COMMENTS
C01	1DB2421	1	BASE CABINET	COLOR - BLACK	24"x21"x36"	24"	21"	36"			PULL1402		
C02	1DB3921	1	BASE CABINET	COLOR - BLACK	39"x21"x36"	39"	21"	36"			PULL1402		
C03	2DB3020	1	BASE CABINET	COLOR - BLACK	30"x24"x19 1/2"	30"	24"	19 1/2"			PULL1402 (2)		
C04	4DB1221	2	BASE CABINET	COLOR - BLACK	12"x21"x36"	12"	21"	36"			PULL1402 (4)		
C05	4DB1521	2	BASE CABINET	COLOR - BLACK	15"x21"x36"	15"	21"	36"			PULL1402 (4)		
C06	4DB1821	2	BASE CABINET	COLOR - BLACK	18"x21"x36"	18"	21"	36"			PULL1402 (4)		
C07	4DB2412	2	BASE CABINET	COLOR - BLACK	24"x21"x36"	24"	21"	36"			PULL1402 (4)		
C08	4DB621	3	BASE CABINET	COLOR - BLACK	6"x21"x36"	6"	21"	36"			PULL1402 (4)		
C09	B12	2	BASE CABINET	COLOR - BLACK	12"x24"x36"	12"	24"	36"	FRAMED PANEL		PULL1402 (2)		
C10	B12R	1	BASE CABINET	COLOR - BLACK	12 1/8"x24"x36"	12 1/8"	24"	36"	FRAMED PANEL		PULL1402		
C11	B12R	5	BASE CABINET	COLOR - BLACK	12"x24"x36"	12"	24"	36"	FRAMED PANEL		PULL1402		
C12	B15	1	BASE CABINET	COLOR - BLACK	14 7/8"x24"x36"	14 7/8"	24"	36"	FRAMED PANEL		PULL1402 (2)		
C13	B15R	1	BASE CABINET	COLOR - BLACK	15"x24"x36"	15"	24"	36"	FRAMED PANEL		PULL1402		
C14	B16R	1	BASE CABINET	COLOR - BLACK	15 5/8"x24"x36"	15 5/8"	24"	36"	FRAMED PANEL		PULL1402		
C15	B18	1	BASE CABINET	COLOR - BLACK	18"x24"x36"	18"	24"	36"	FRAMED PANEL		PULL1402 (2)		
C16	B21	1	BASE CABINET	COLOR - BLACK	21"x24"x36"	21"	24"	36"			PULL1402 (2)		
C17	B21	2	BASE CABINET	COLOR - BLACK	21"x24"x36"	21"	24"	36"	FRAMED PANEL		PULL1402 (2)		
C18	B24	4	BASE CABINET	COLOR - BLACK	24"x24"x36"	24"	24"	36"	FRAMED PANEL		PULL1402 (2)		
C19	B2412	2	BASE CABINET	COLOR - WHITE	24"x12"x36"	24"	12"	36"	FRAMED PANEL		PULL1402 (2)		
C20	B241R	1	BASE CABINET	COLOR - BLACK	24"x12"x36"	24"	12"	36"	FRAMED PANEL		PULL1402		
C21	B24R	2	BASE CABINET	COLOR - BLACK	24"x24"x36"	24"	24"	36"	FRAMED PANEL		PULL1402		
C22	B336	1	BASE CABINET	COLOR - BLACK	33"x24"x36"	33"	24"	36"	FRAMED PANEL		PULL1402 (2)		
C23	B336	1	BASE CABINET	COLOR - BLACK	30"x24"x36"	30"	24"	36"	FRAMED PANEL		PULL1402		
C24	RB30	1	BASE CABINET	COLOR - BLACK	30"x24"x36"	30"	24"	36"	FRAMED PANEL		PULL1402 (2)		
C25	RB4230	1	BASE CABINET	COLOR - BLACK	42"x30 3/16"x36"	42"	30 3/16"	36"	FRAMED PANEL		PULL1402 (2)		
C26	SB2421	5	BASE CABINET	COLOR - BLACK	24"x21"x36"	24"	21"	36"	FRAMED PANEL		PULL1402 (2)		
C27	SB24R	2	BASE CABINET	COLOR - BLACK	24"x24"x36"	24"	24"	36"	FRAMED PANEL		PULL1402		
C28	U193490	1	UTILITY CABINET	COLOR - BLACK	15"x33 7/8"x40"	15"	33 7/8"	40"					
C29	U181202R	1	UTILITY CABINET	COLOR - BLACK	18"x12"x102"	18"	12"	102"	FRAMED PANEL		PULL1402		
C30	U1815120	3	UTILITY CABINET	COLOR - BLACK	18"x18"x114 5/8"	18"	18"	114 5/8"					
C31	U181860	6	UTILITY CABINET	COLOR - BLACK	18"x19"x84 3/16"	18"	19"	84 3/16"					
C32	U2424120	1	UTILITY CABINET	COLOR - BLACK	24"x24"x114 5/8"	24"	24"	114 5/8"	FRAMED PANEL (2)		PULL1402 (4)		KNOB (4)
C33	U5418144	2	UTILITY CABINET	COLOR - BLACK	54"x18"x144"	54"	18"	144"					
C34	W1230L	1	WALL CABINET	COLOR - BLACK	12"x12"x30"	12"	12"	30"	FRAMED PANEL		PULL1402		
C35	W1230R	1	WALL CABINET	COLOR - BLACK	12"x12"x30"	12"	12"	30"	FRAMED PANEL		PULL1402		
C36	W1236L	1	WALL CABINET	COLOR - BLACK	12"x12"x36"	12"	12"	36"	FRAMED PANEL		PULL1402		
C37	W1236R	1	WALL CABINET	COLOR - BLACK	12"x12"x36"	12"	12"	36"	FRAMED PANEL		PULL1402		
C38	W12918R	2	WALL CABINET	COLOR - BLACK	12"x18"x36"	12"	18"	36"	FRAMED PANEL		PULL1402		
C39	W1530R	1	WALL CABINET	COLOR - BLACK	15"x12"x30"	15"	12"	30"	FRAMED PANEL		PULL1402		
C40	W1536R	1	WALL CABINET	COLOR - BLACK	15"x12"x36"	15"	12"	36"	FRAMED PANEL		PULL1402		
C41	W1830	1	WALL CABINET	COLOR - BLACK	18"x12"x36 5/8"	18"	12"						



ELECTRICAL - DATA - AUDIO LEGEND	
SYMBOL	DESCRIPTION
	Ceiling Fan
	Ventilation Fans: Ceiling Mounted, Wall Mounted
	Ceiling Mounted Light Fixtures: Surface/Pendant, Recessed, Heat Lamp, Low Voltage
	Wall Mounted Light Fixtures: Flush Mounted, Wall Sconce
	Chandelier Light Fixture
	Fluorescent Light Fixture
	240V Receptacle
	110V Receptacles: Duplex, Weather Proof, GFCI
	Switches: Single Pole, Weather Proof, 3-Way, 4-Way
	Switches: Dimmer, Timer
	Audio Video: Control Panel, Switch
	Speakers: Ceiling Mounted, Wall Mounted
	Wall Jacks: CAT5, CAT5 + TV, TV/Cable
	Telephone Jack
	Intercom
	Thermostat
	Door Chime, Door Bell Button
	Smoke Detectors: Ceiling Mounted, Wall Mounted
	Electrical Breaker Panel

**ELECTRICAL DATA & AUDIO NOTES:**

HOME OWNER SHALL DO A WALK-THRU WITH RELEVANT INSTALLERS TO VERIFY THE EXACT LOCATION FOR OUTLETS, LIGHTS, SWITCHES, CABLE, DATA, PHONE, AUDIO, ETC.

**ELECTRICAL NOTES:**

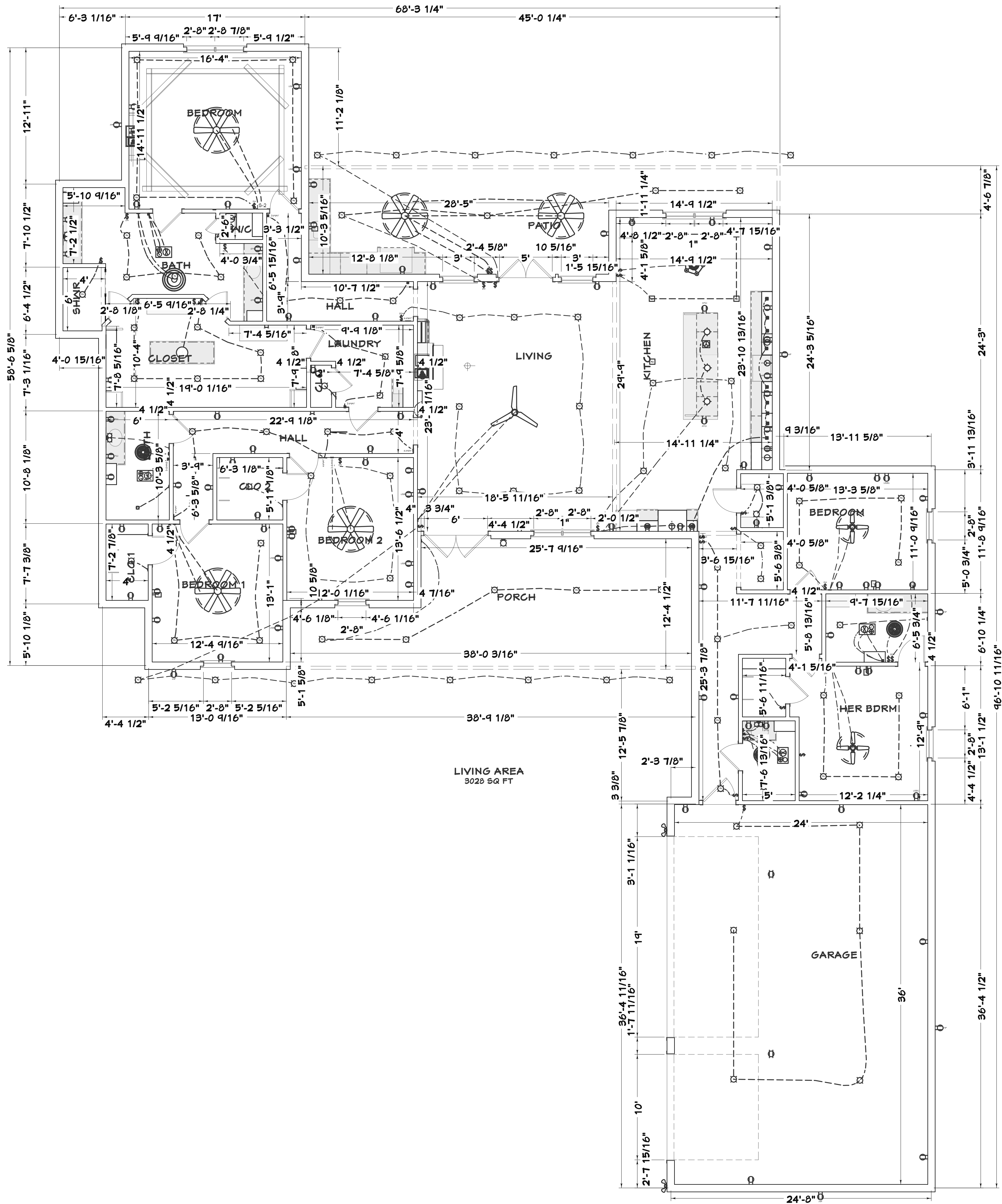
- ELECTRICAL RECEPTACLES IN BATHROOMS, KITCHENS AND GARAGES SHALL BE Q.F.I. ORG F.I.C. PER NATIONAL ELECTRICAL CODE REQUIREMENTS.
- PROVIDE ONE SMOKE DETECTOR IN EACH ROOM AND ONE IN EACH CORRIDOR ACCESSING BEDROOMS. CONNECT SMOKE DETECTORS TO HOUSE POWER AND INTER-CONNECT SMOKE DETECTORS SO THAT WHEN ANY ONE IS TRIPPED, THEY ALL WILL SOUND. PROVIDE BATTERY BACKUP FOR ALL UNITS.
- CIRCUITS SHALL BE VERIFIED WITH HOME OWNER PRIOR TO WIRE INSTALLATION.
- FINAL SWITCHES FOR TIMERS AND DIMMERS SHALL BE VERIFIED WITH HOME OWNER.
- FIXTURES TO BE SELECTED BY HOME OWNER.

**AUDIO:**

- LOCATE SPEAKERS AND AUDIO CONTROLS AS INDICATED IN THE PLAN; RUN CIRCUIT OF SPEAKER WIRING TO AUDIO HOME PANEL SPECIFIED BY FLOOR.
- AUDIO SPEAKERS TO BE APPROVED BY HOME OWNER.
- LOCATE JACKS AS INDICATED IN THE PLAN; INSTALL DATA / CABLE PANEL SIMILAR TO "ON Q". SYSTEM TO BE APPROVED BY HOME OWNER.

**DATA / CABLE:**

LOCATE SECURITY PANELS AS INDICATED IN THE PLAN; SYSTEM TO BE APPROVED BY HOME OWNER.



REVISION TABLE	
NUMBER	DATE

JASMINE ANTHONY  
BASTROP, LA

Electrical

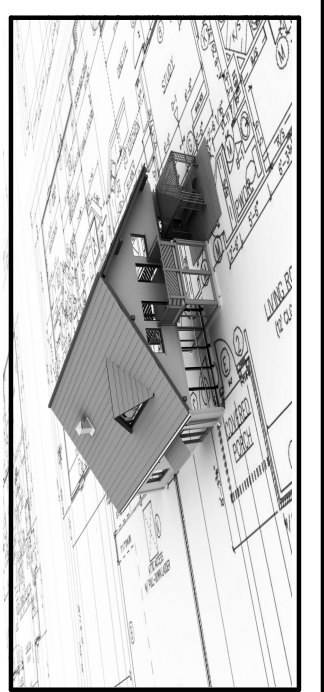
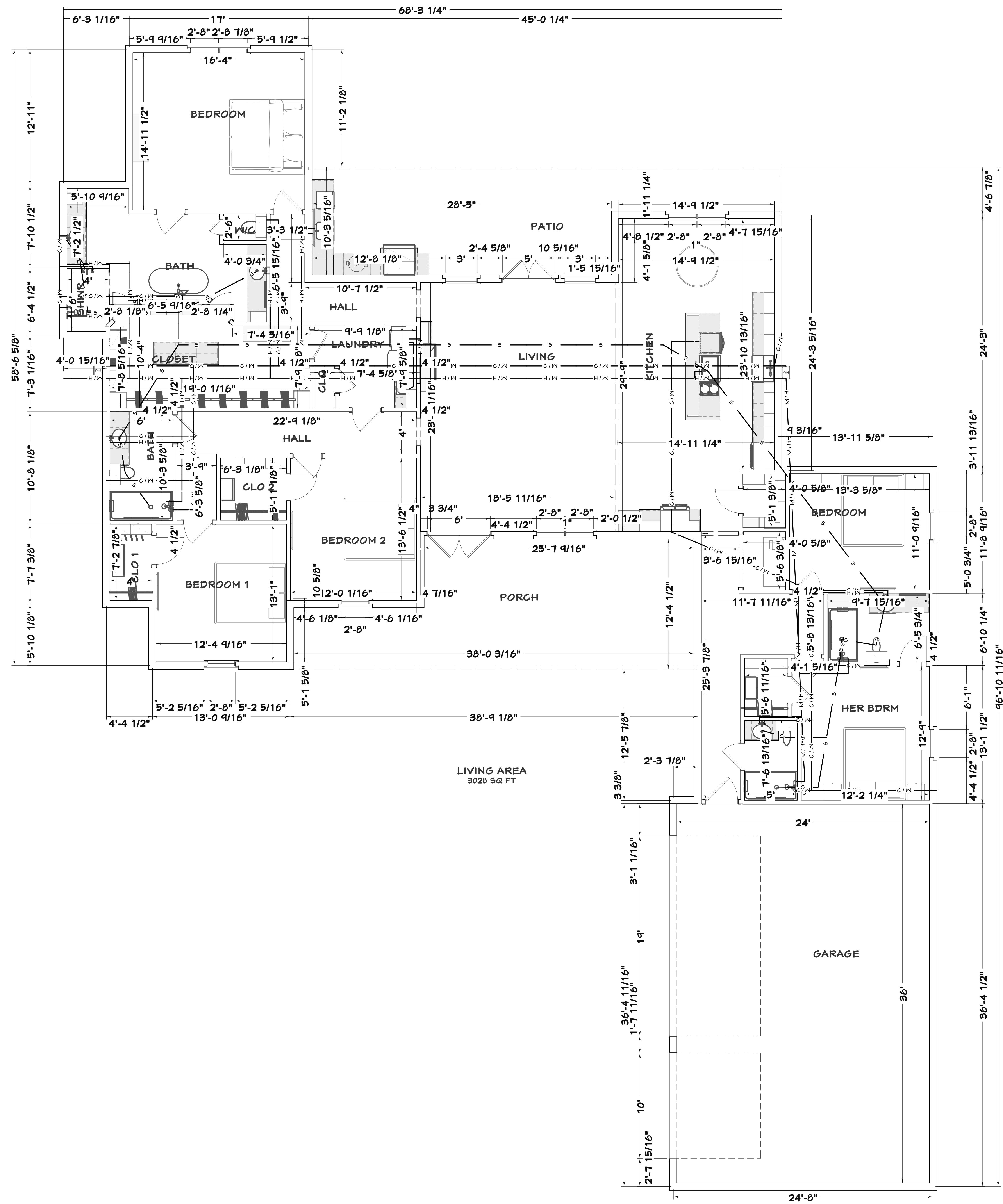
SHEET TITLE:

DRAWINGS PROVIDED BY:  
Danny Russell  
Russell's Plan Service, L.L.C

DATE:  
1/1/2025

SCALE:  
1/4"=1'0"

SHEET:  
7



REVISION TABLE	NUMBER	DATE	DESCRIPTION

**JASMINE ANTHONY**  
**BASTROP, LA**

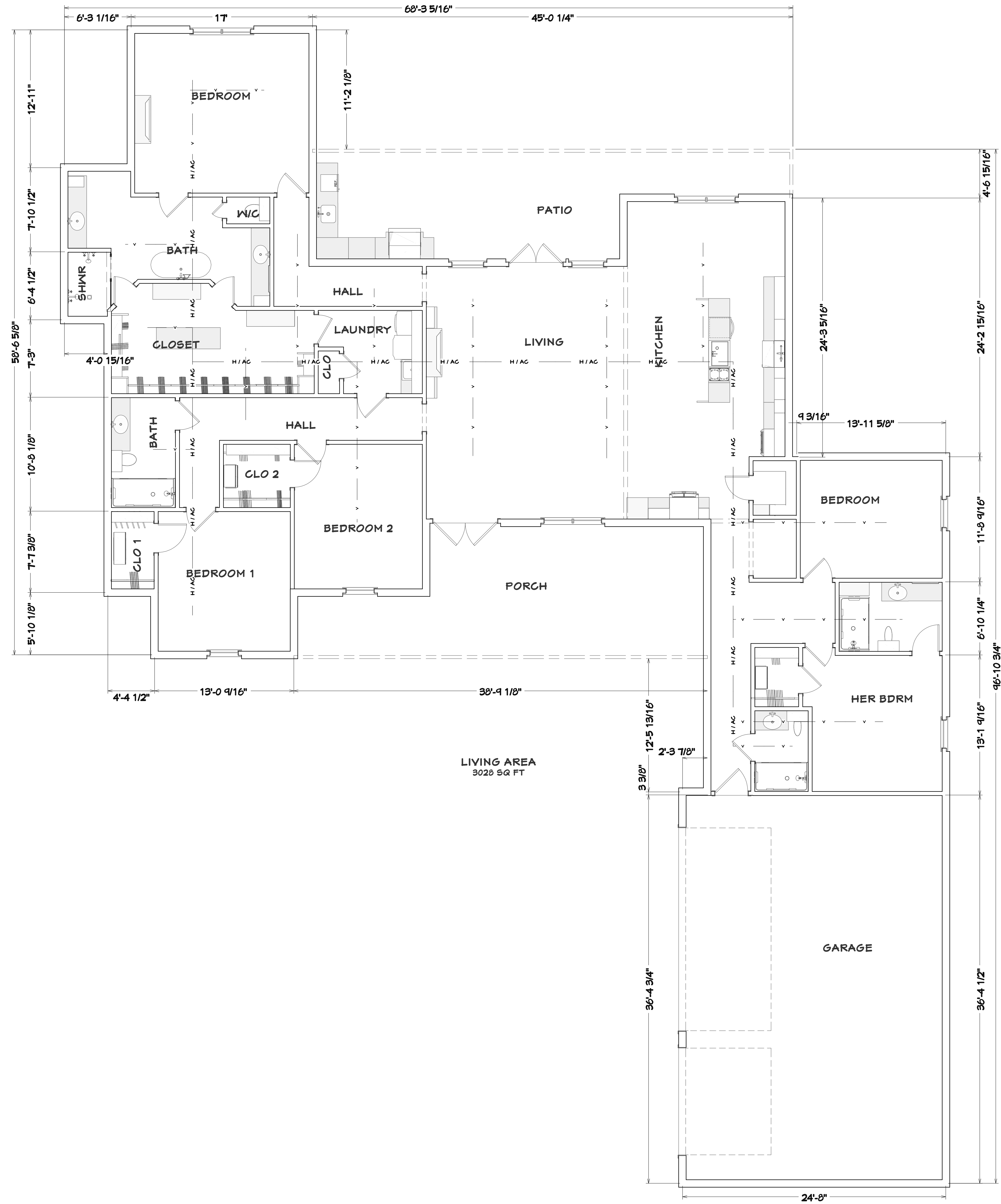
**Plumbing**

**DRAWINGS PROVIDED BY:**  
Danny Russell  
Russell's Plan Service, L.L.C

**DATE:**  
1/1/2025

**SCALE:**  
1/4"=1'0"

**SHEET:**  
**8**



REVISION TABLE	NUMBER	DATE	REVISED BY	DESCRIPTION

**JASMINE ANTHONY**  
BASTROP, LA

**HVAC**

**DRAWINGS PROVIDED BY:**  
Danny Russell  
Russell's Plan Service, L.L.C

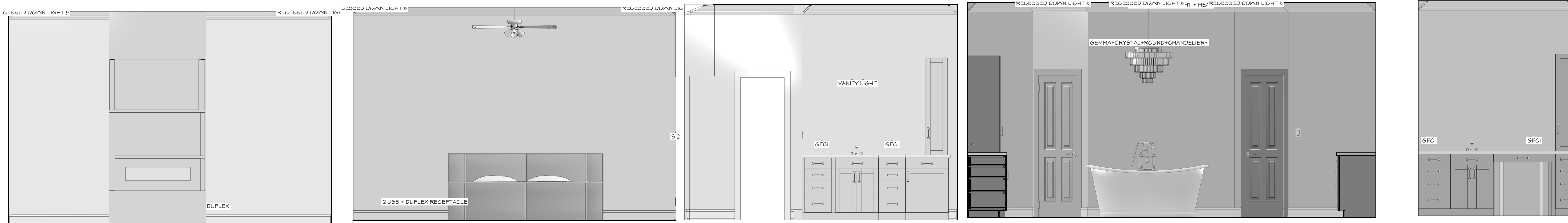
**DATE:**  
1/1/2025

**SCALE:**  
1/4"=1'0"

**SHEET:**  
**9**

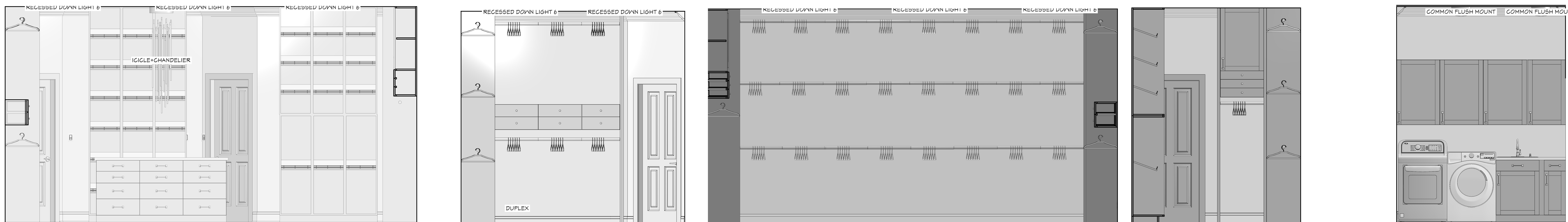


Kitchen Cabinet Layout



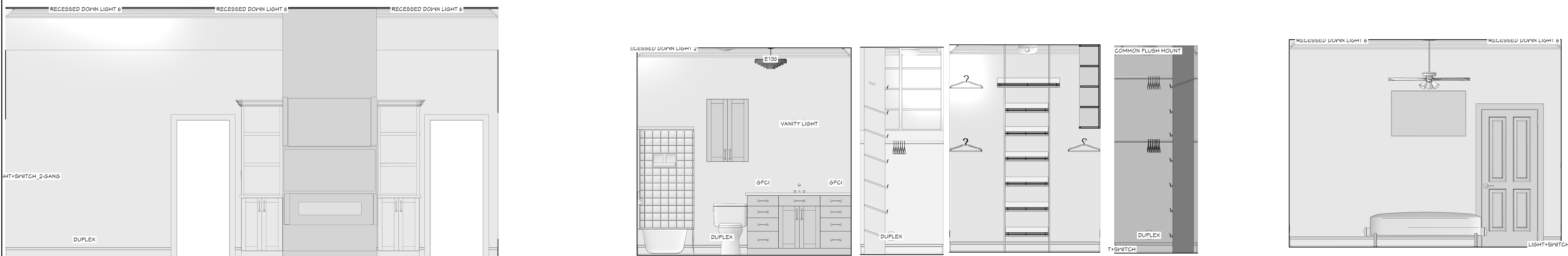
Master Bedroom

Master Bath



Master Closet

Laundry

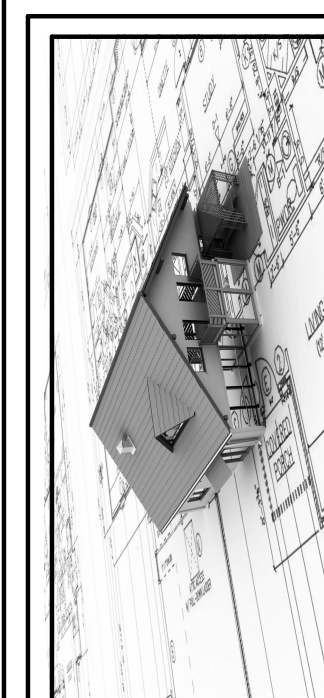


Living Rm Layout

Boy's Bathroom

Boy's Clo. 1

Boy's Bedroom 1



REVISION TABLE	REVISION NUMBER	DATE	REVISION DESCRIPTION

JASMINE ANTHONY  
BASTROP, LA

Room Details

DRAWINGS PROVIDED BY:  
Danny Russell  
Russell's Plan Service, L.L.C

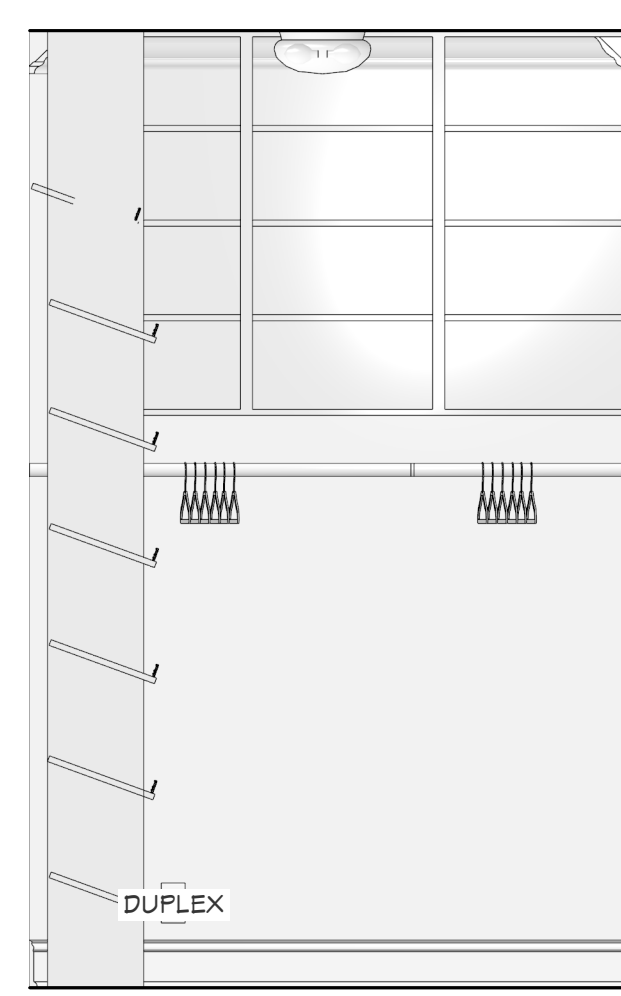
DATE:  
1/1/2025

SCALE:  
1/2"=1'0"

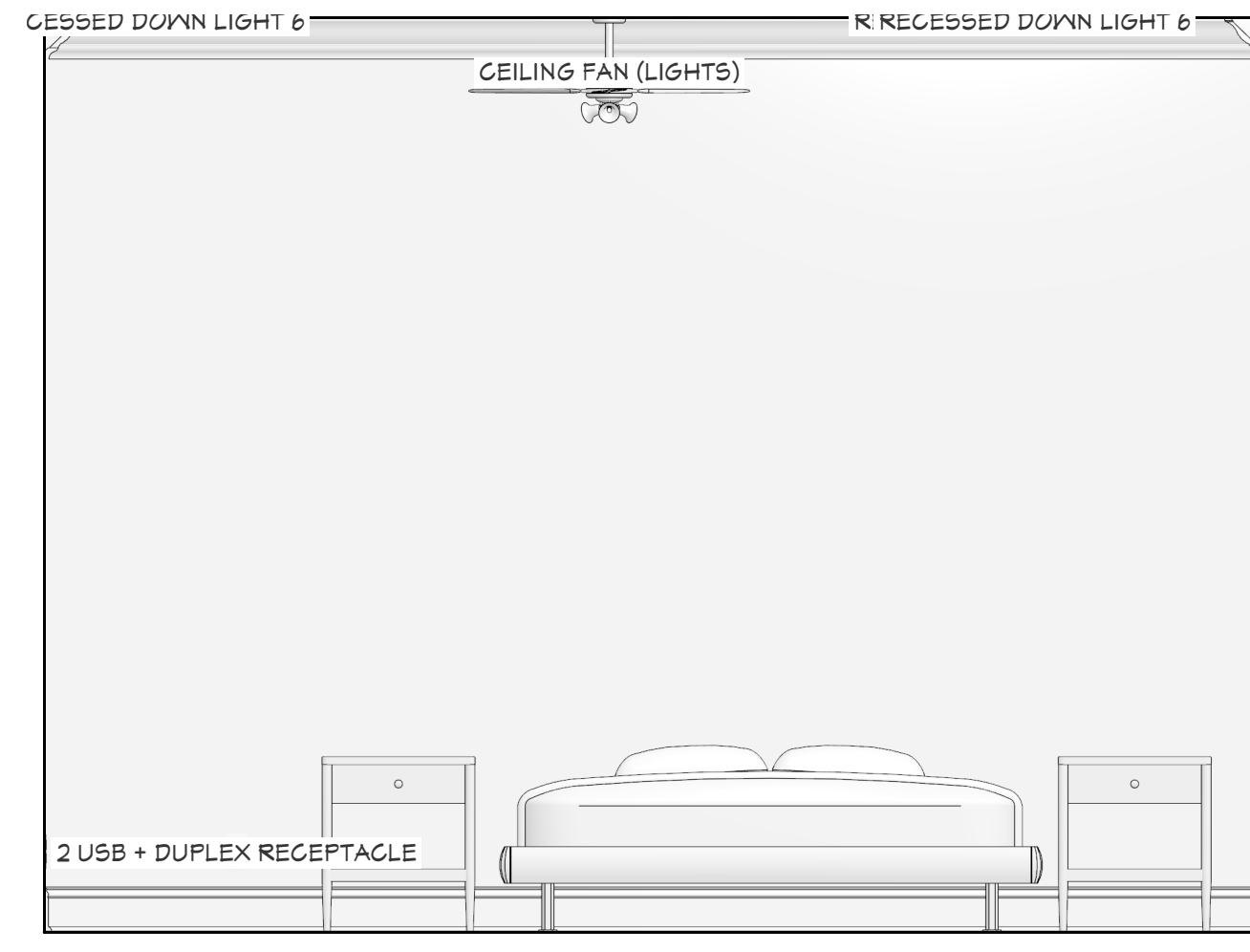
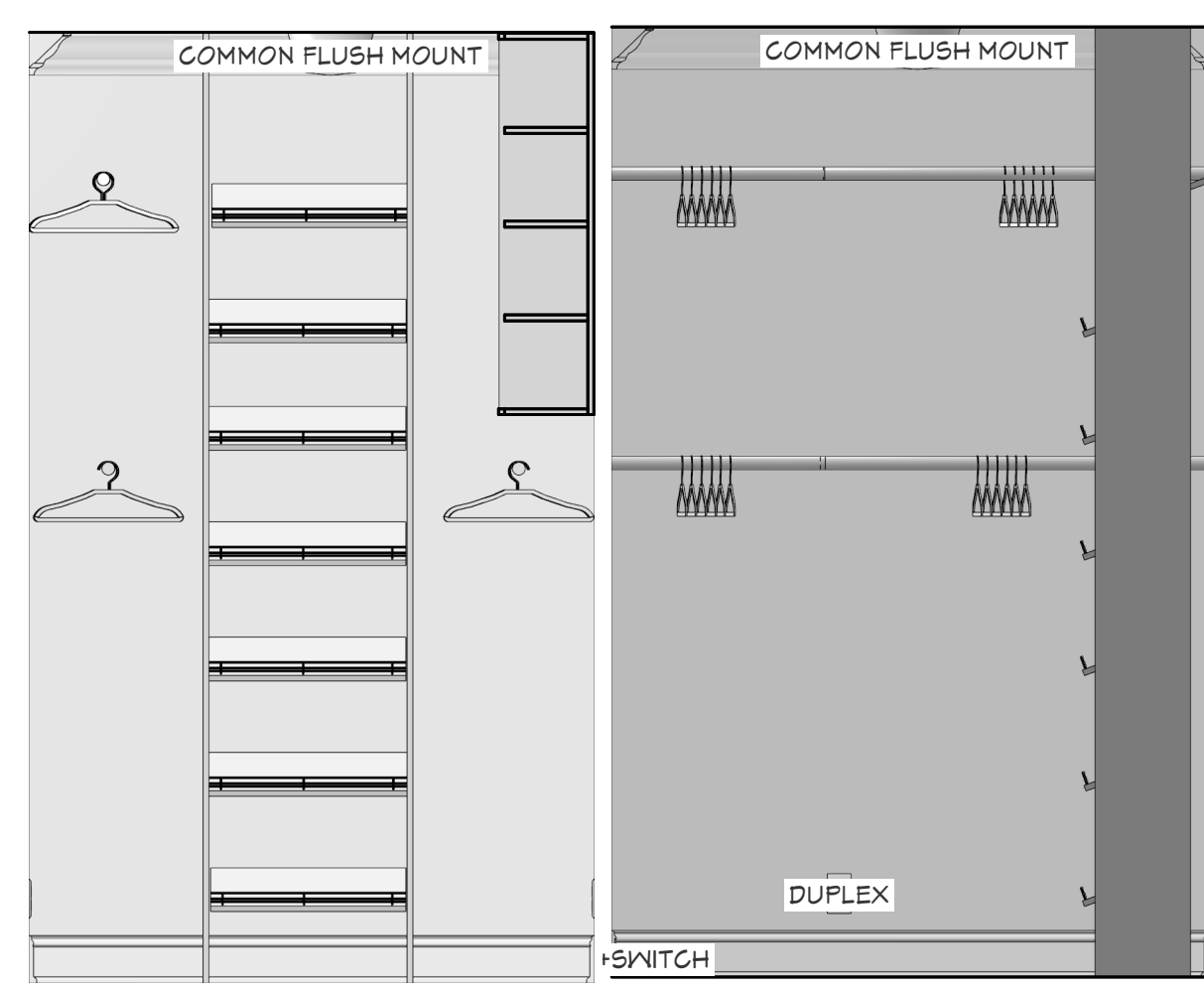
SHEET:  
10



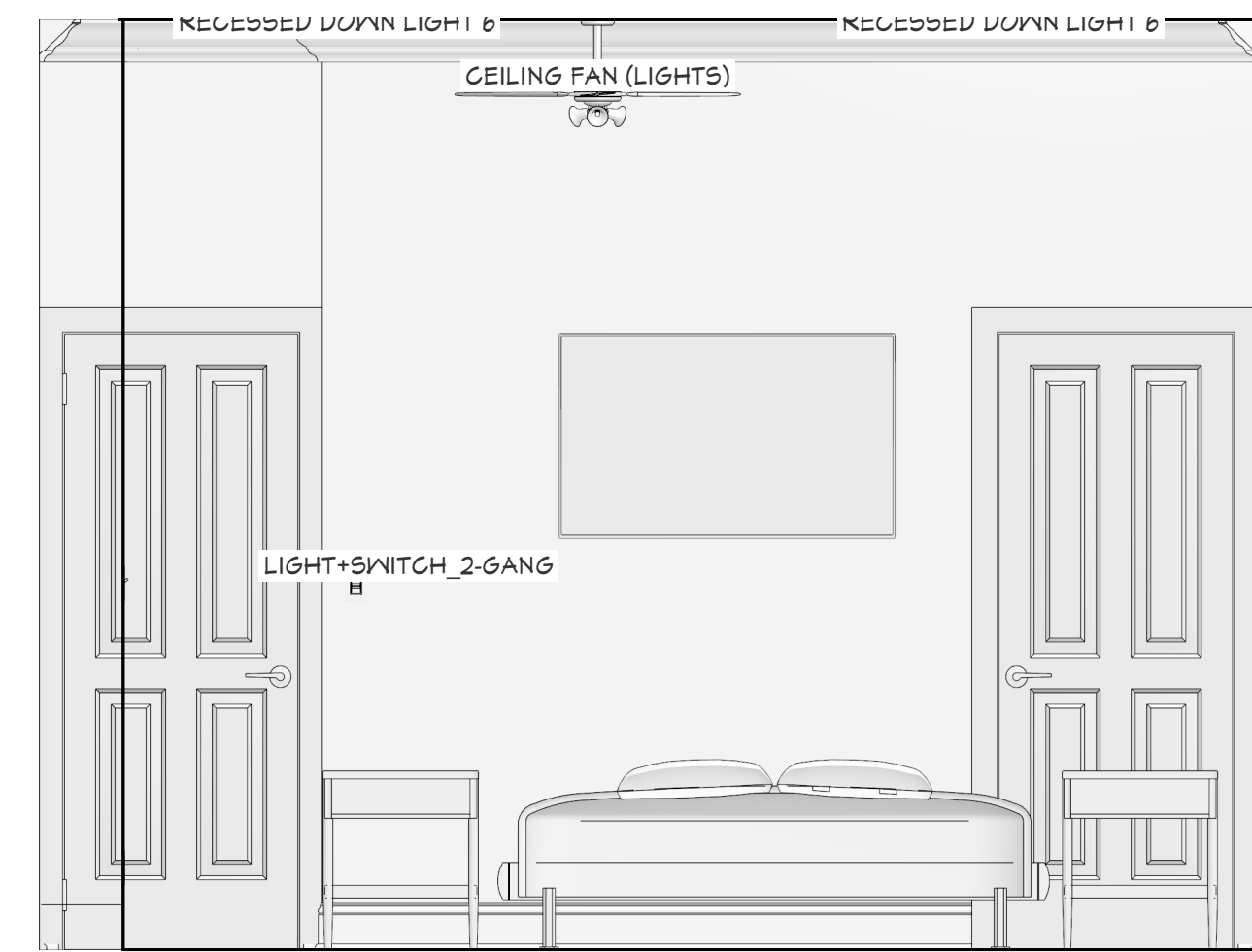
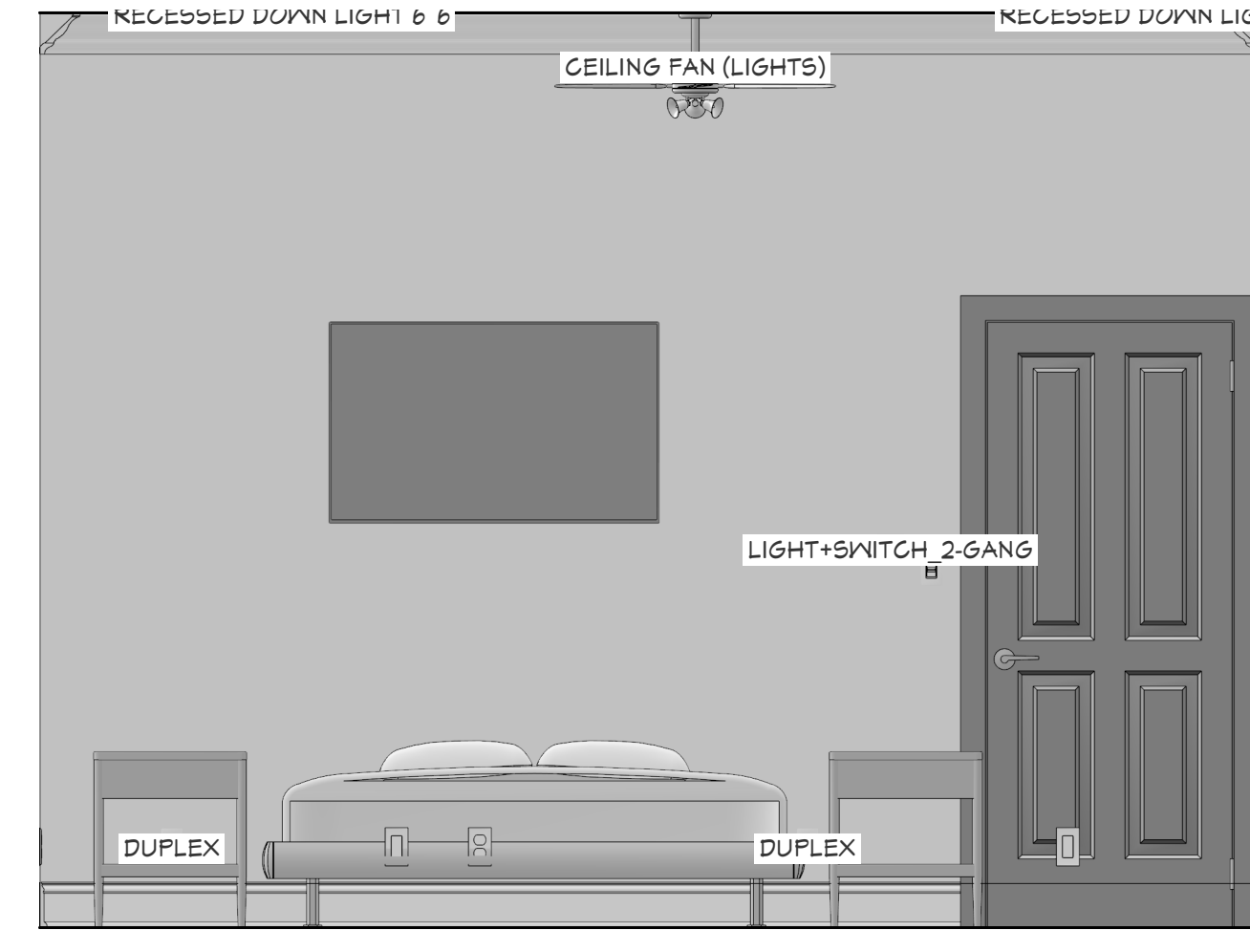
Boy's Bedroom 2



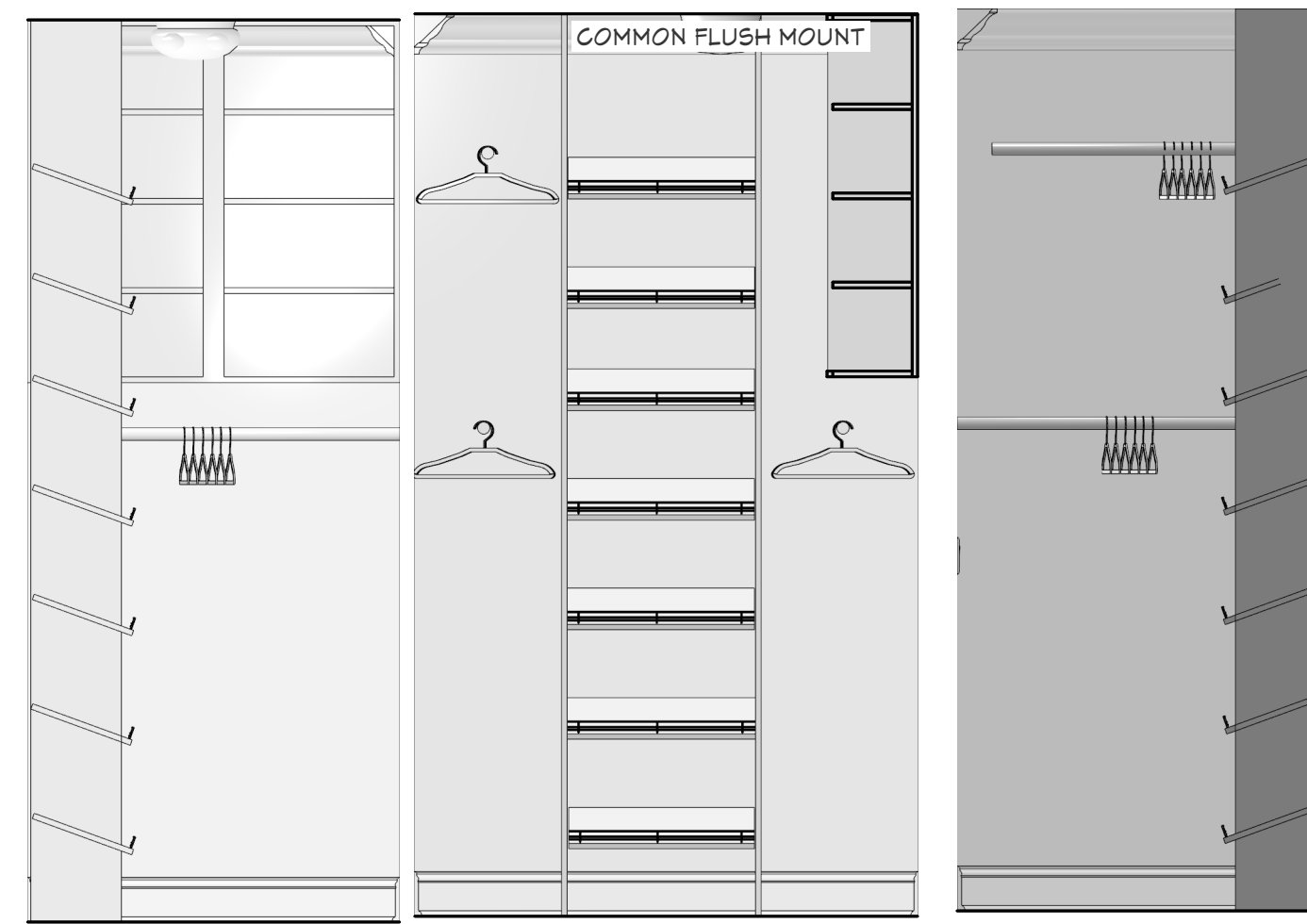
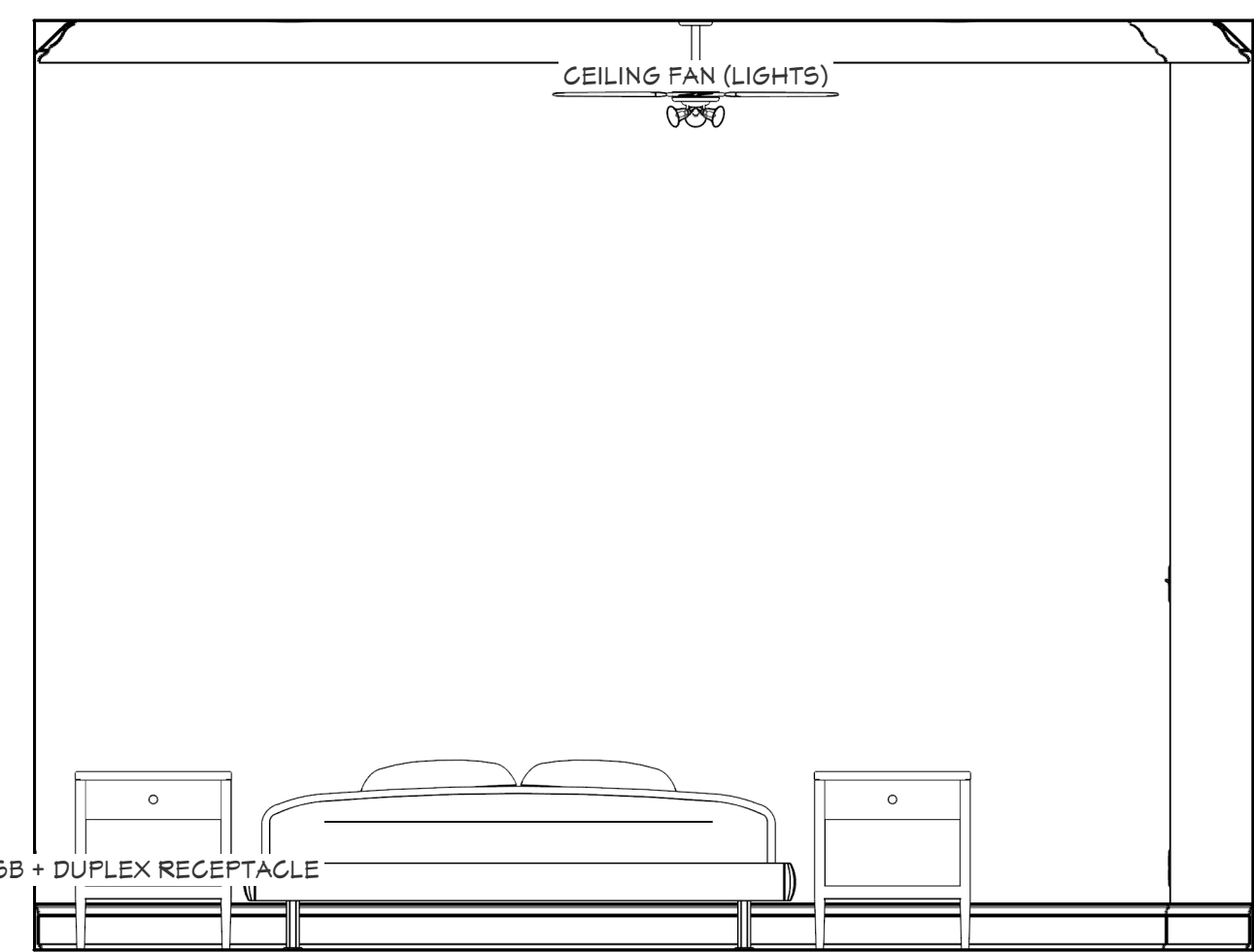
Clo. 2



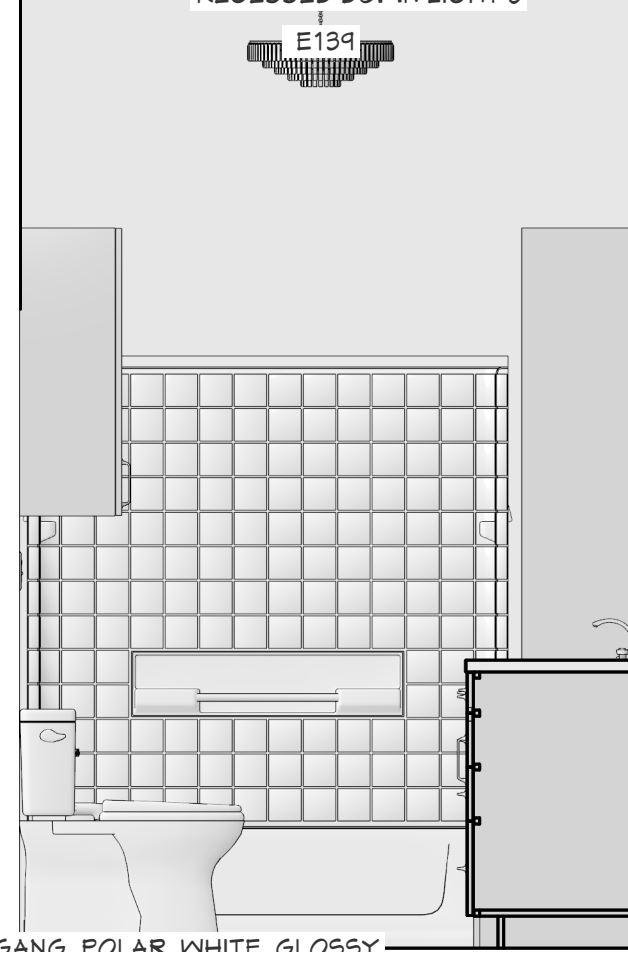
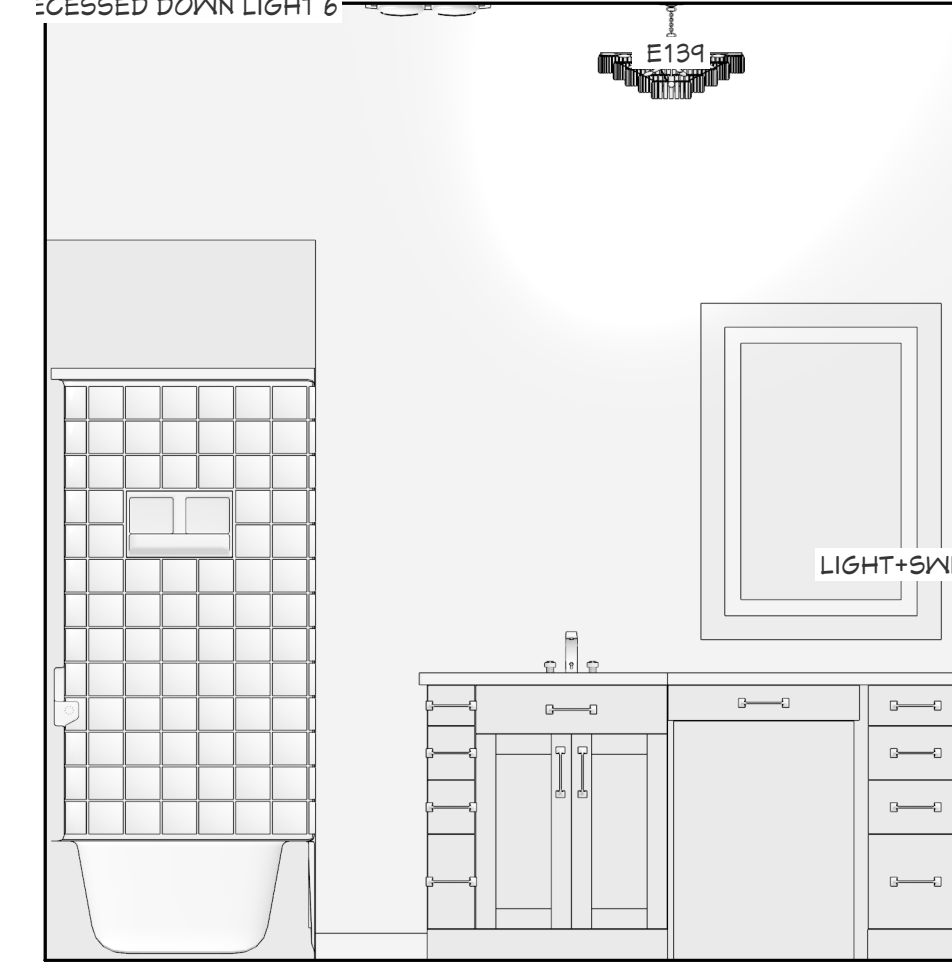
Guest Bedroom



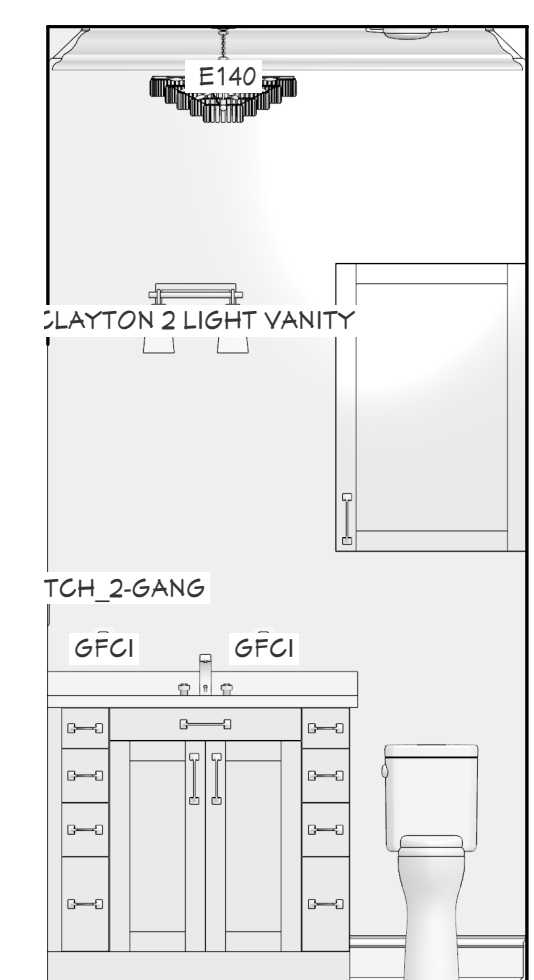
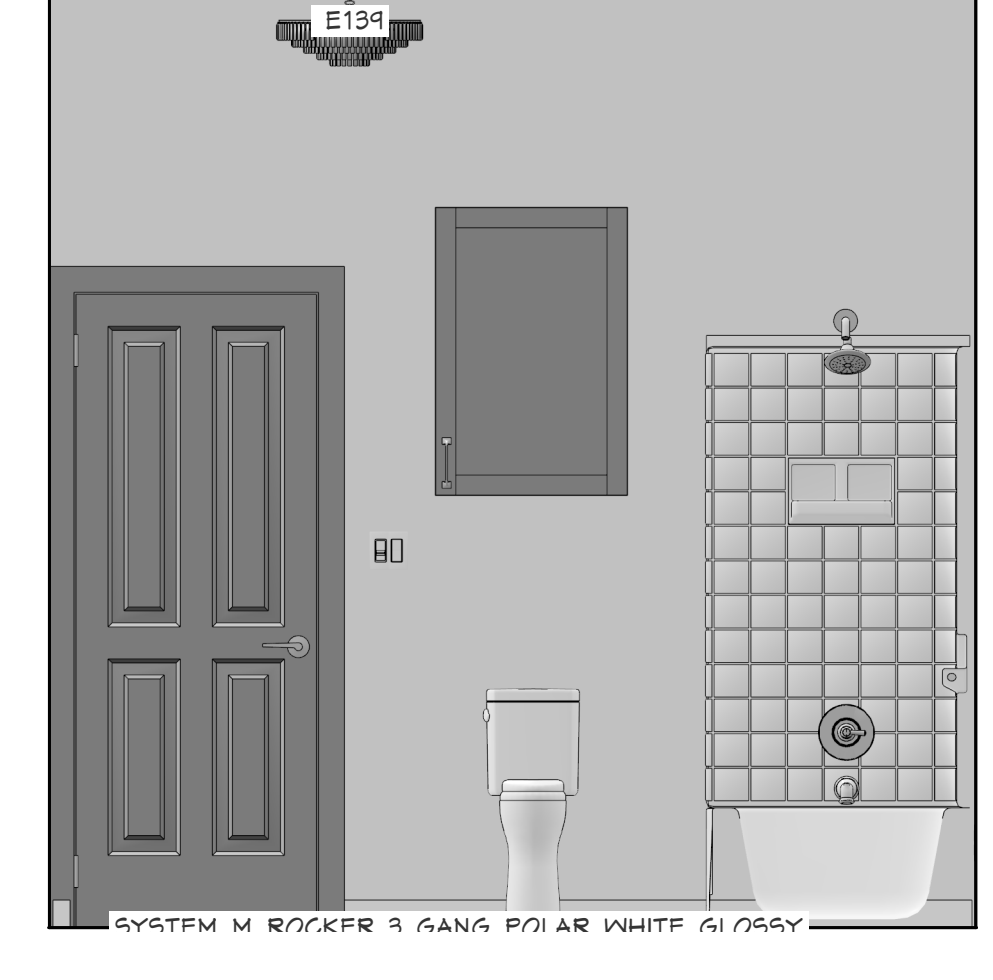
Her Bedroom



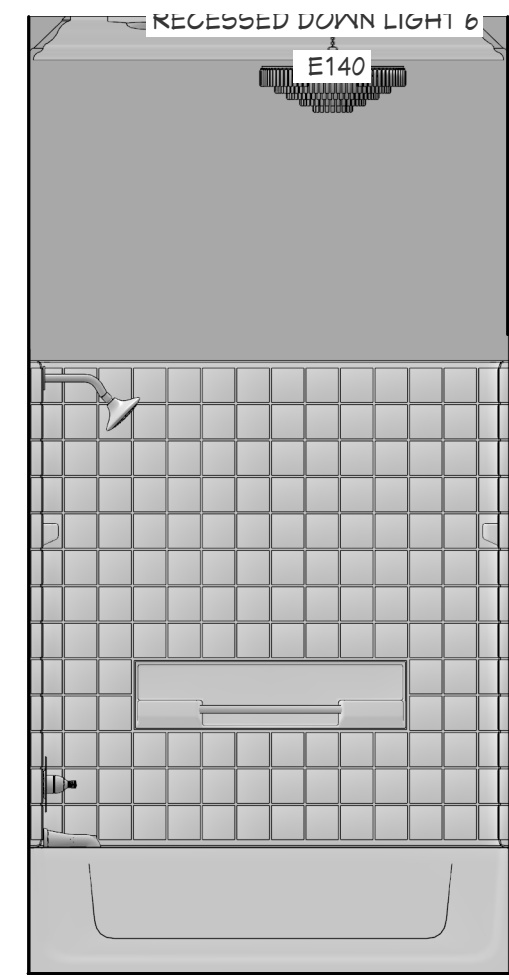
Her Closet



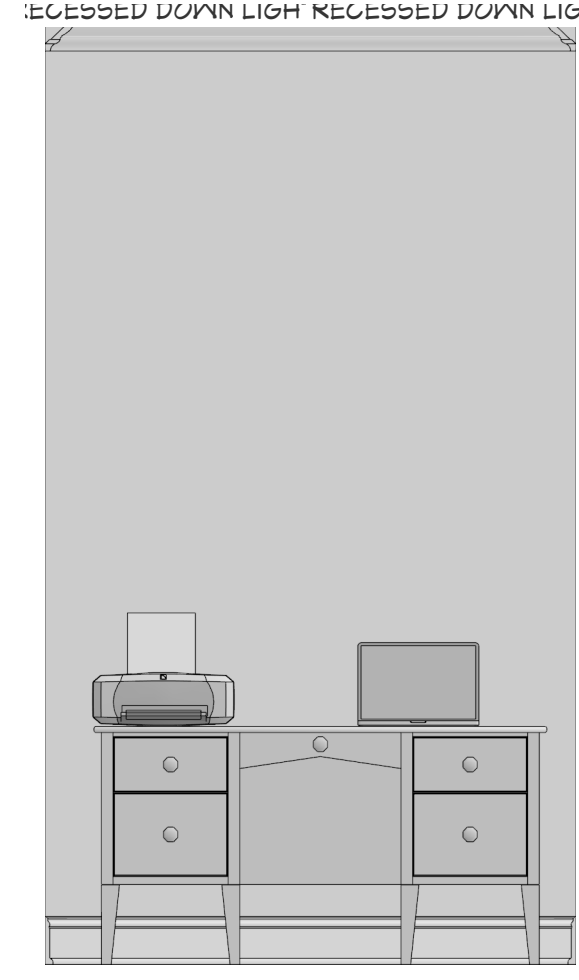
Her Bath



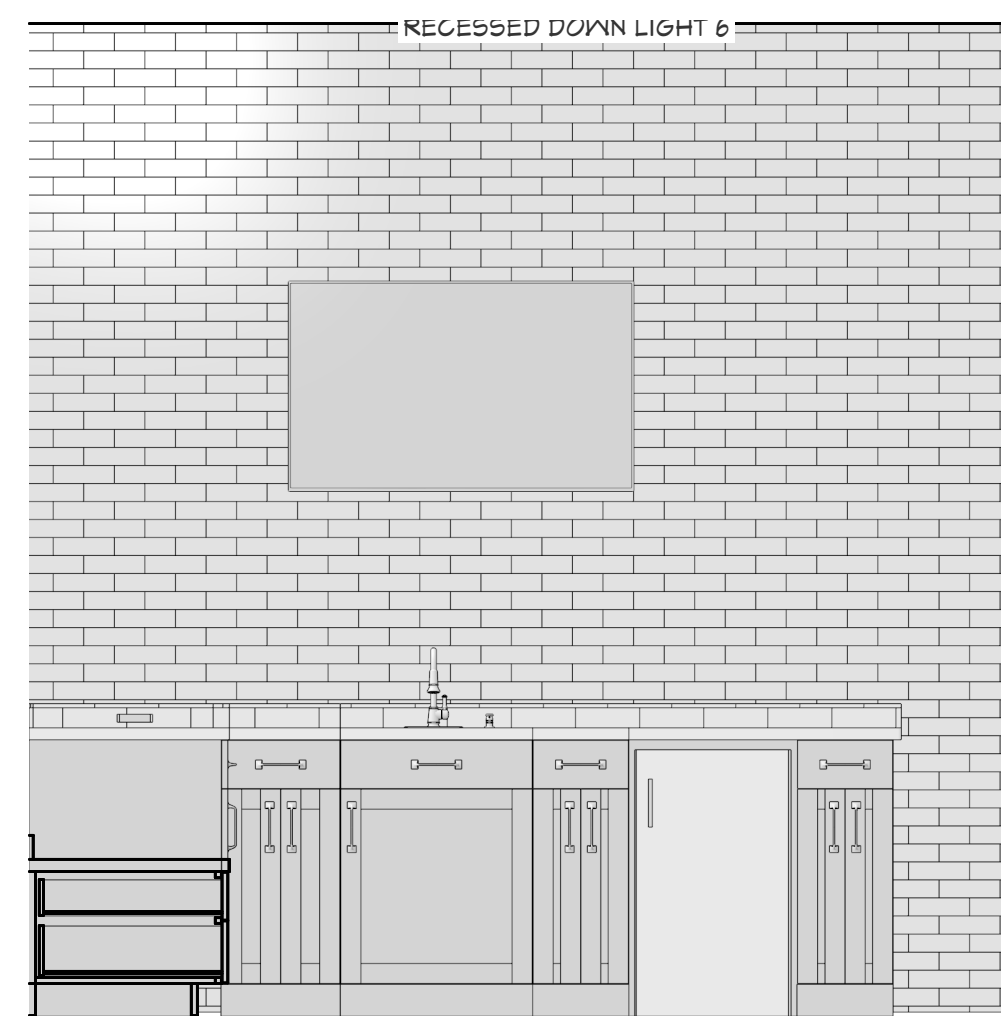
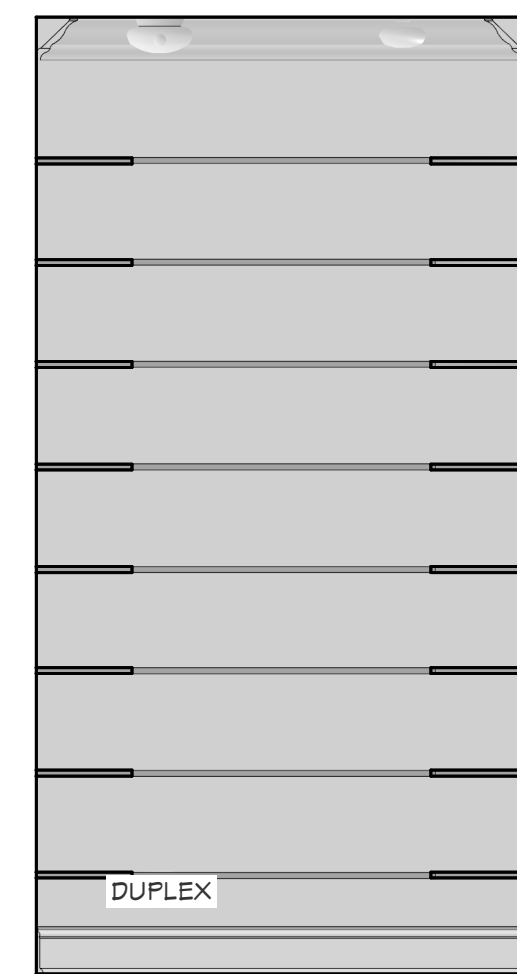
Guest Bath



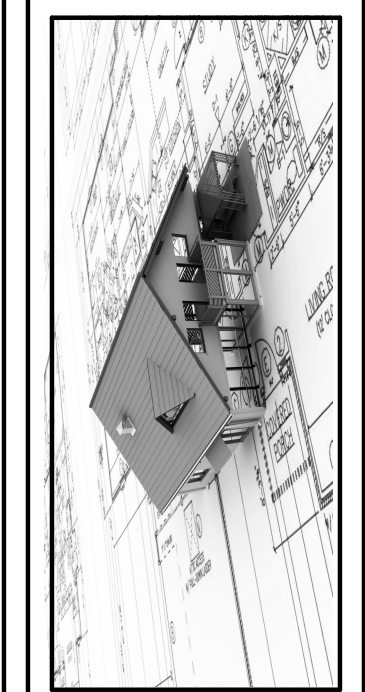
Computer Rm.



Pantry



Outdoor Kitchen



REVISION TABLE	DESCRIPTION
NUMBER	DATE

JASMINE ANTHONY  
BASTROP, LA

Room Details

DRAWINGS PROVIDED BY:  
Danny Russell  
Russell's Plan Service, L.L.C.

DATE:  
1/1/2025

SCALE:  
1/2"=1'0"

SHEET:  
11